

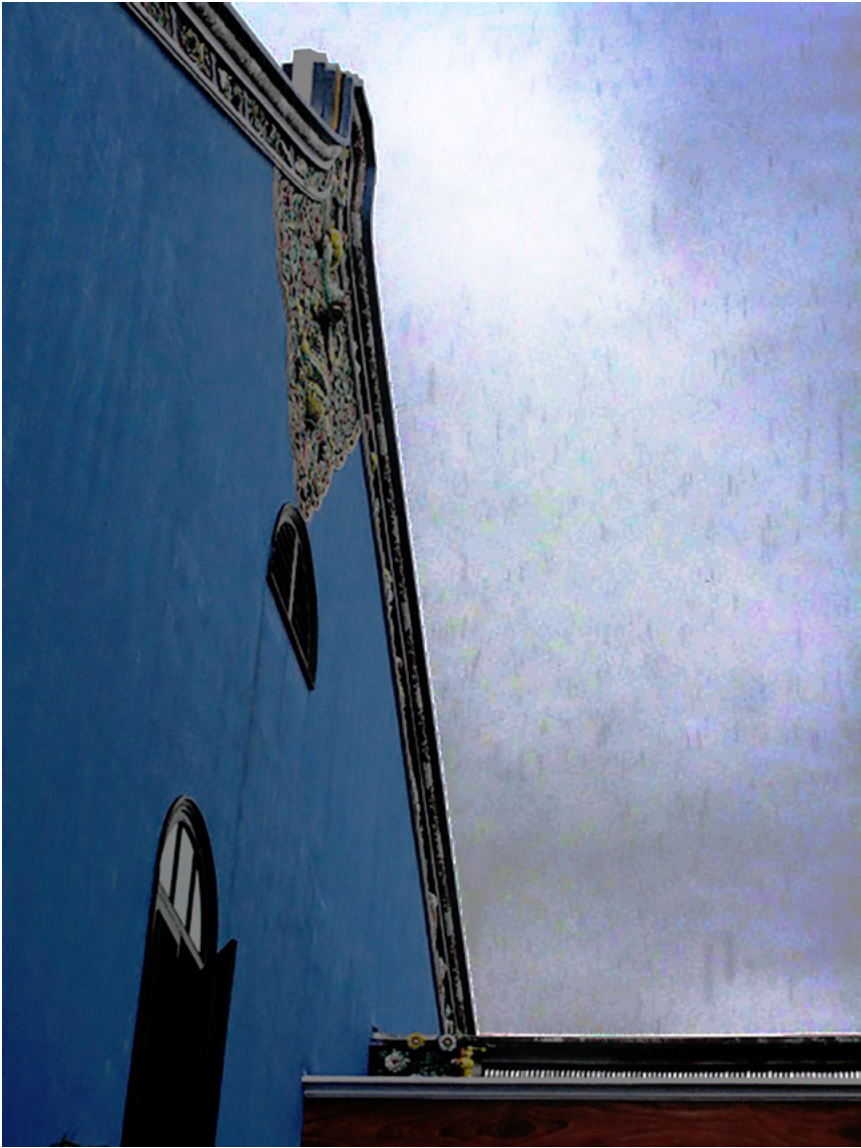


## The Myths of Blue Mansion

The mansion is eclectic, Baroque, Chinoiserie,  
Gothic louvered windows,  
Chinese cut and paste porcelain  
Stoke-on-Trent floor tiles  
Glasgow cast iron works  
and Art Nouveau stained glass windows.  
Blue dye made from the indigo plant.  
The limewash was very effective  
in a tropical weather  
as it absorbed moisture and cooled...

through the darkness of the night.  
She was his favourite of all his eight wives  
She puts on a wig of pulled-back hair  
She puts on a pair of silky golden shoes  
The balcony doors open and a wind blows into  
Feet heavily planted on the floor  
Tales of attempted murders  
As we look at this solitary  
Leaving some mysteries to solve  
The ghosts of the mansion are everywhere



























































































*POEM16 The Myths of Blue Mansion*

May, 2021

29 images

Penang, January, 2009

Special thanks to Khun Klaomas Yipintsoi and Khun Nopadon Kaosam-ang

© Kornkrit Jianpinidnan



